



**((( CareTech®**  
Call for care

LAS  
Local Alarm Solutions

## LAS Messaging

Today messages are an integral part of everyday lives.

The Health Industry is no exception, in fact, alerts and alarm messages assist Carers and Nurses in their everyday roles.



Our LAS (Local Alarm Solution) combines the latest software technology with existing hardware to facilitate low cost premium messaging systems.

Messaging can be output today via GSM, DECT, Pagers, EMail and realtime Java Applications on some Mobile phones:

## LAS Reporting Solution

### Maintaining a Simple Reporting Regime is Paramount

Our reporting solutions allow for the supervision of processes and systems, thus providing you with a powerful management tool. The Health Industry demands certain data be collected and having the ability to produce this information is something that LAS makes easy. Reports can be run on any data field that the SQL Data base holds. LAS has many standard reports as shown below.

Reports Menu To print out any of the available reports click on "VIEW" and then click on "REPORTS"

Each report allows a number of criteria to be set

*Last Month or last week total report. Be aware if it is a busy site it may take a considerable time to compile a report and run to many pages.*

*From and To allow the user to be more specific and set the start date and time and the end date and time required.*

*The user can be very specific and only print alarms between certain times of the day for specific days and certain ID numbers.*

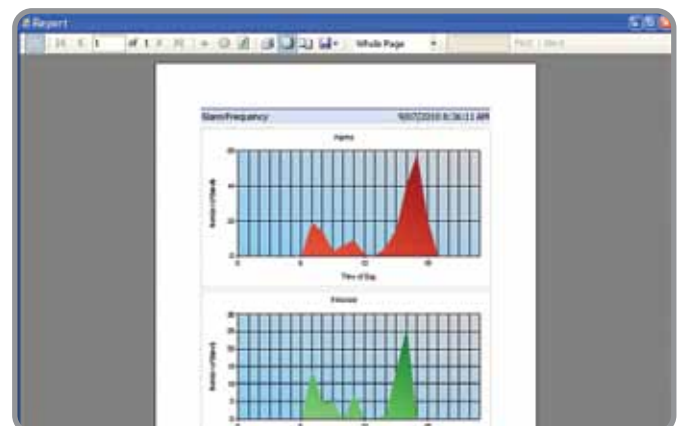
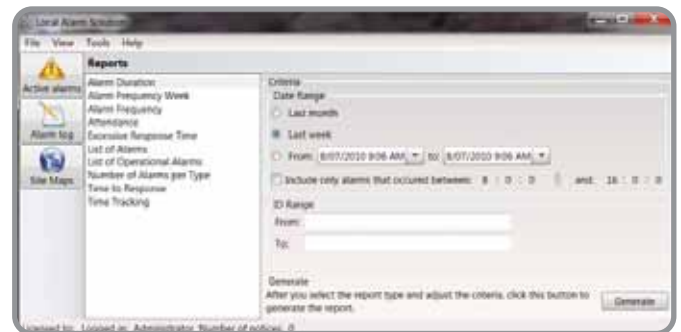
**ALARM FREQUENCY ALARM DURATION** - This report gives you the date and time, the ID of the alarm, the type of alarm, the response time and the duration of the alarm.

**ALARM FREQUENCY WEEK** - This report graphs the number of alarms in total per day for a week

**EXCESSIVE RESPONSE TIME** - This report allow the user to set a time and then display all alarms that were responded to beyond that time (e.g. the alarm was active for 15 minutes before any staff attended to it.)

**LIST OF ALARMS** - This report lists all alarms from all ID numbers and the type of alarm and when it occurred.

**LIST OF OPERATIONAL ALARMS** - This report lists





technical alarms associated with the equipment.

**Time to Response ATTENDANCE** - This report is not yet available but it is designed to show the amount of time staff spend in the residents room for each alarm.

**NUMBER OF ALARMS PER TYPE** - This report graphs all alarm types showing the breakup of alarm types received.

Many more reports can be produced. On these pages, we have shown you just a sample of what is available. CareTech can help you by providing customised reports tailored exactly to your needs. Talk to us about your reporting needs. We're here to help.

Time to Response				9/07/2010 8:31:12 AM	
ID	Min	Avg	Max		
0001	00:00:00	30:00:40	30:04:13		
0002	00:00:01	30:00:01	30:00:01		
0101	00:00:01	30:00:01	30:00:02		
0005	00:00:00	30:00:16	30:07:31		
100 Radio	00:00:01	30:00:02	30:00:05		
5555	00:00:01	30:00:04	30:00:44		
8888	00:00:13	30:01:14	30:03:08		
Room 82	00:00:02	30:00:20	30:01:52		
Test Room	00:00:02	30:00:02	30:00:02		
	00:00:00	00:00:17	00:07:31		

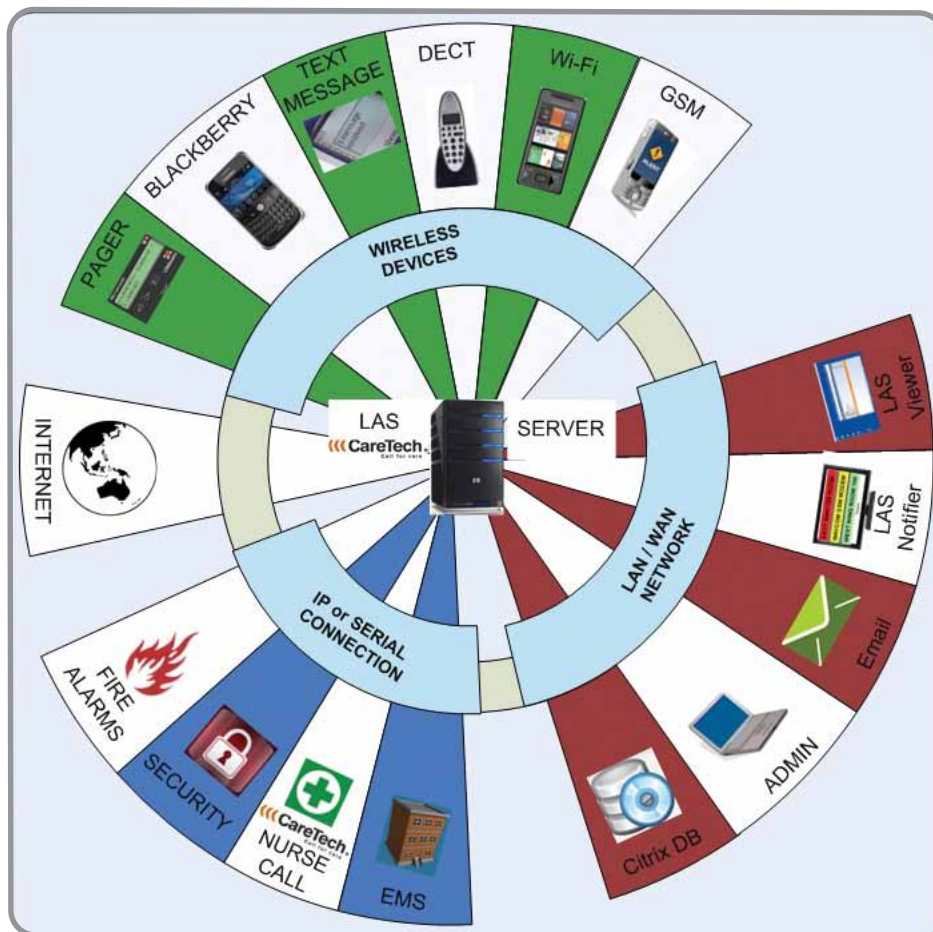
## LAS Interfaces

### Interfacing With Legacy Systems

Connecting legacy systems and keeping current equipment functioning is always important. Our LAS (Local Alarm Solution) allows existing hardware to be interfaced with new systems.

Our interface solutions can connect existing Nurse Call System, Fire Alarms Systems and Paging Systems together and then send messages via GSM. See the diagram below to get an idea of the type of interfacing that is possible with LAS.

### LAS Client Database

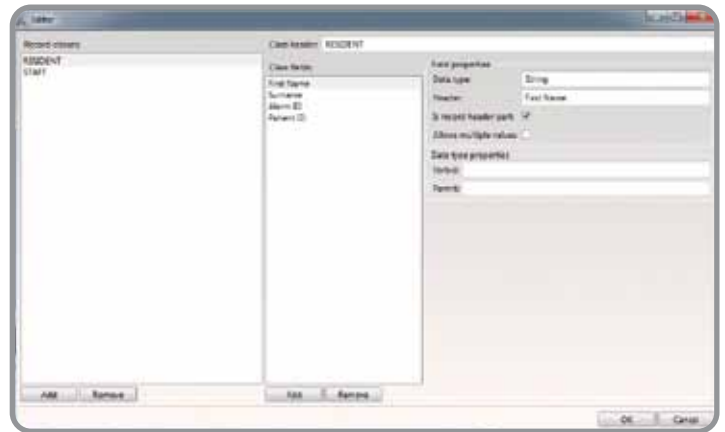


Today having a database of all information logged in a system is a standard function for all systems.

CareTech now introduces its customized data storage system where the user can define fields that are added to the



database. These new fields allow the data base never to be limited in its design so when the client's needs change so can the LAS Database. Using a Patient Data record as an example... your patient has his name, surname, next of kin etc. recorded then the government decides to have a new medical support number allocated to all patients that are using tele-medicine.... this new data field can now be easily added to the data base with the patients details inserted. Any report from this time on will contain that data field and show all historical data with that particular field. Even more powerful the new CT-005 CareTech Alarm system adds any new type of alarm to the system (this alarm data is then able to be fully stored into the LAS Database and reports created).



Database information storage, back-up and redundancy are always important and with the SQL Data dump module LAS can store all client data at the HEAD office or send it to a special off-site location. Not only store your Data but access for reporting as well. Obtain reports giving site vs site for head office.

